



SOUTHLANDS

# GRANGE

Centre for Farming & Food

Red Barn Event Rental

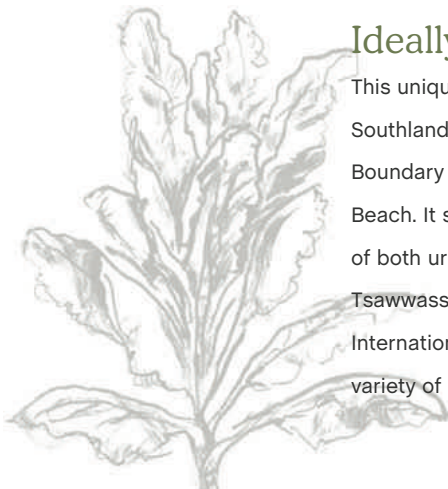
# Welcome to the Red Barn

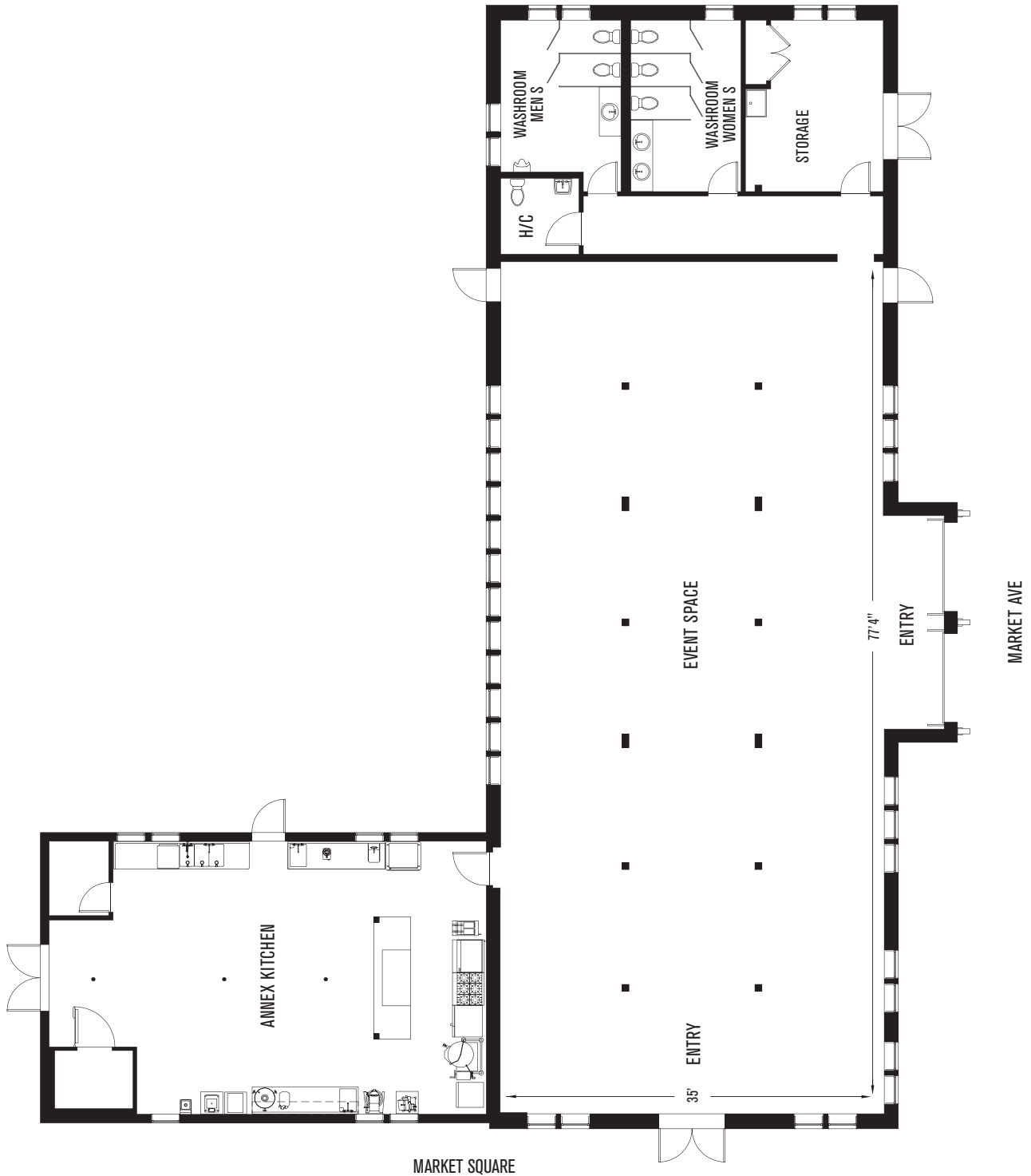
The Red Barn at Southlands Tsawwassen is the perfect indoor and outdoor venue for your wedding or event. In the heart of Market Square, the Red Barn maintains much of its historic original character. The barn offers a warm and social hub and has been designed to host community and private events, and winter farmers' markets. There is also a kitchen at the Red Barn which can be used for plating of pre-prepared food.



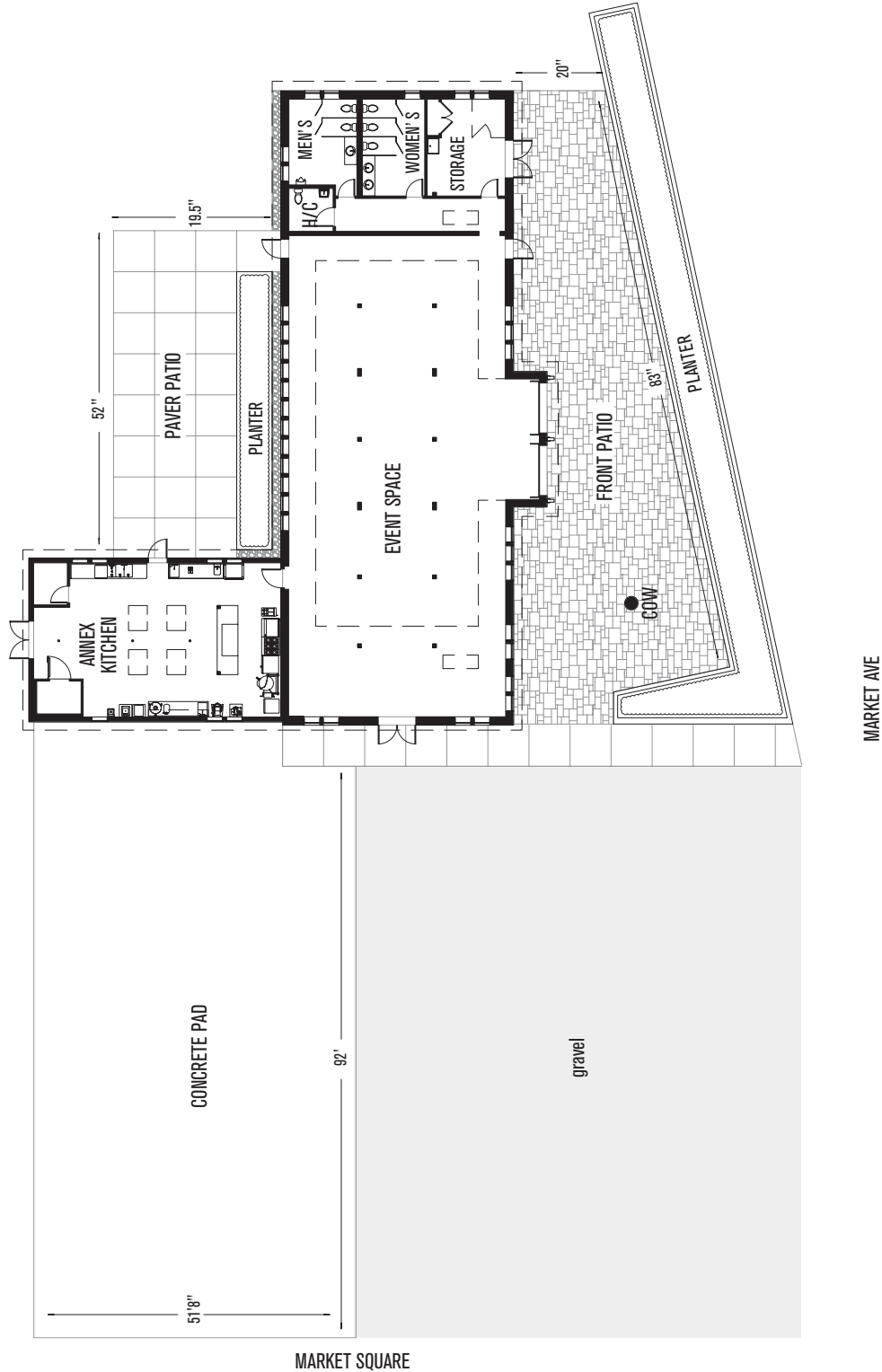
## Ideally Located

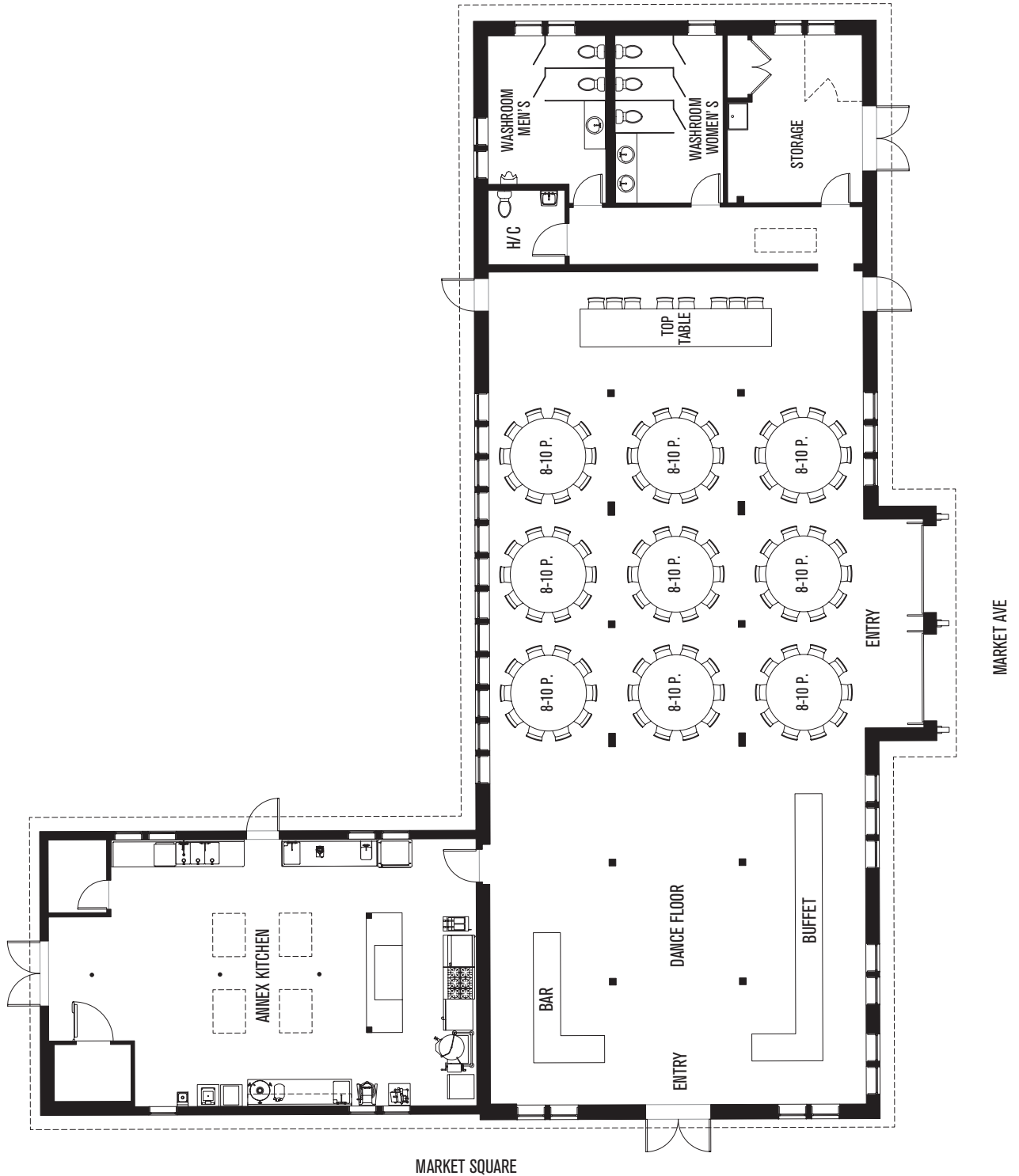
This unique barn is located in the new Southlands development across the street from Boundary Bay regional park and Centennial Beach. It sits within a community of 530 acres of both urban and rural land. Southlands Tsawwassen is just 30km from Vancouver International Airport, making it accessible for a variety of guests.





# Red Barn & Surrounding Area





# Red Barn Pricing Structure 2026

(subject to availability, subject to change without prior notice)

Item	Term	Cost (excludes GST)
Wedding	<ul style="list-style-type: none"> <li>Friday: daytime rental (day prior to wedding) from 9am-6pm for setup, rehearsal etc.</li> <li>Saturday: 1 full day rental from 9am-11pm</li> <li>Sunday: 1/2 day rental (day after wedding) from 8am-12pm for event cleanup, rental returns/pickups etc.</li> <li>Venue Coordinator (Saturday, up to 12 hours)</li> <li>Venue Coordinator (up to 5.5 hours of time for advance questions from time of booking)</li> </ul>	\$8,085
Full day rental*	Friday - Sunday 9am-11pm	\$2,890
Mid week rate (Full day)	Monday - Thursday	\$2,040
Mid week rate (Half day)	Monday - Thursday (up to 6 hours)	\$1,080
Non refundable deposit		25%
Refundable damage/excessive cleaning deposit		\$700 per booking

## Additional Requirements & Inclusions

Liability insurance	All rentals require the user to purchase General Liability Insurance of \$2 million	Variable
Equipment	<ul style="list-style-type: none"> <li>130 chairs</li> <li>25 rectangle 6 foot tables</li> <li>22 round 6 foot tables</li> <li>6 30" diameter cocktail tables at 30" or 42" high</li> <li>Garbage receptacles</li> <li>Beverage bar \$150 per booking (optional)</li> </ul> <p>Please note that tables and chairs are used for a variety of events and may require covering with linens (linens and smallwares not supplied).</p>	Included in any rental fee

\*Discounts available for non profit, charitable status businesses and Southlands Tsawwassen residents  
 Limited half day Saturday rentals available, 4 pm - 11 pm. Please enquire.

# Red Barn Pricing Structure 2027

(subject to availability, subject to change without prior notice)

Item	Term	Cost (excludes GST)
Wedding	<ul style="list-style-type: none"> <li>Friday: daytime rental (day prior to wedding) from 9am-6pm for setup, rehearsal etc.</li> <li>Saturday: 1 full day rental from 9am-11pm</li> <li>Sunday: 1/2 day rental (day after wedding) from 8am-12pm for event cleanup, rental returns/pickups etc.</li> <li>Venue Coordinator (Saturday, up to 12 hours)</li> <li>Venue Coordinator (up to 5.5 hours of time for advance questions from time of booking)</li> </ul>	\$8,595
Full day rental*	Friday - Sunday 9am-11pm	\$2,995
Mid week rate (Full day)	Monday - Thursday	\$2,100
Mid week rate (Half day)	Monday - Thursday (up to 6 hours)	\$1,150
Non refundable deposit		25%
Refundable damage/excessive cleaning deposit		\$700 per booking

## Additional Requirements & Inclusions

Liability insurance	All rentals require the user to purchase General Liability Insurance of \$2 million	Variable
Equipment	<ul style="list-style-type: none"> <li>130 chairs</li> <li>25 rectangle 6 foot tables</li> <li>22 round 6 foot tables</li> <li>6 30" diameter cocktail tables at 30" or 42" high</li> <li>Garbage receptacles</li> <li>Beverage bar \$150 per booking (optional)</li> </ul> <p>Please note that tables and chairs are used for a variety of events and may require covering with linens (linens and smallwares not supplied).</p>	Included in any rental fee

\*Discounts available for non profit, charitable status businesses and Southlands Tsawwassen residents  
Limited half day Saturday rentals available, 4 pm - 11 pm. Please enquire.

# Gallery

Part of the original dairy farm at Southlands, this historic barn's original character and patina has been refreshed and repurposed to create a modern gathering place.



# Red Barn Suggested Vendors

## Catering

**Bon Moment Bake Shop** - [BonMomentBakedShop.com](http://BonMomentBakedShop.com)

**Coast Tsawwassen Inn Sales & Catering Office** - [TsawwassenInn.com](http://TsawwassenInn.com)

Michelle Harman, Sales Manager

Jenny Woelbern, Sales & Catering Coordinator

604.948.5185

---

## Florals

**Southlands Flowers**

info@southlandsgrange.ca

**Thrifty Flowers** - [ThriftyFoods.com](http://ThriftyFoods.com)

Customer Care - 1.866.948.0196

---

## Decor & Rentals

**Pedersens Event Rentals** - [Vancouver.Pedersens.com](http://Vancouver.Pedersens.com)

604.324.7368 / sales.vancouver@pedersens.com

**Surdel Party Rental** - [SPRentals.ca](http://SPRentals.ca)

604.596.1771 / info@surdelpartyrentals.com

---

## Event & Wedding Planners

**Werk & Wed** - [WerkandWed.com](http://WerkandWed.com)

Kristine Aquino

hello@werkandwed.com

SOUTHLANDS  
**GRANGE**

Centre for Farming & Food

TO LEARN MORE

[EMAIL US TODAY](#)



604.655.4769  
INFO@SOUTHLANDSGRANGE.CA

SOUTHLANDS MARKET SQUARE  
6388 MARKET SQUARE, TSAWWASSEN

