



SOUTHLANDS

# GRANGE

Centre for Farming & Food

Red Barn Event Rental

# Welcome to the Red Barn

The Red Barn at Southlands Tsawwassen is the perfect indoor and outdoor venue for your wedding or event. In the heart of Market Square, the Red Barn maintains much of its historic original character. The barn offers a warm and social hub and has been designed to host community and private events, and winter farmers' markets. There is also a kitchen at the Red Barn which can be used for plating of pre-prepared food.



## Ideally Located

This unique barn is located in the new Southlands development across the street from Boundary Bay regional park and Centennial Beach. It sits within a community of 530 acres of both urban and rural land. Southlands Tsawwassen is just 30km from Vancouver International Airport, making it accessible for a variety of guests.



SOUTHLANDS  
**GRANGE**  
Centre for Farming & Food

# Red Barn

CAPACITY

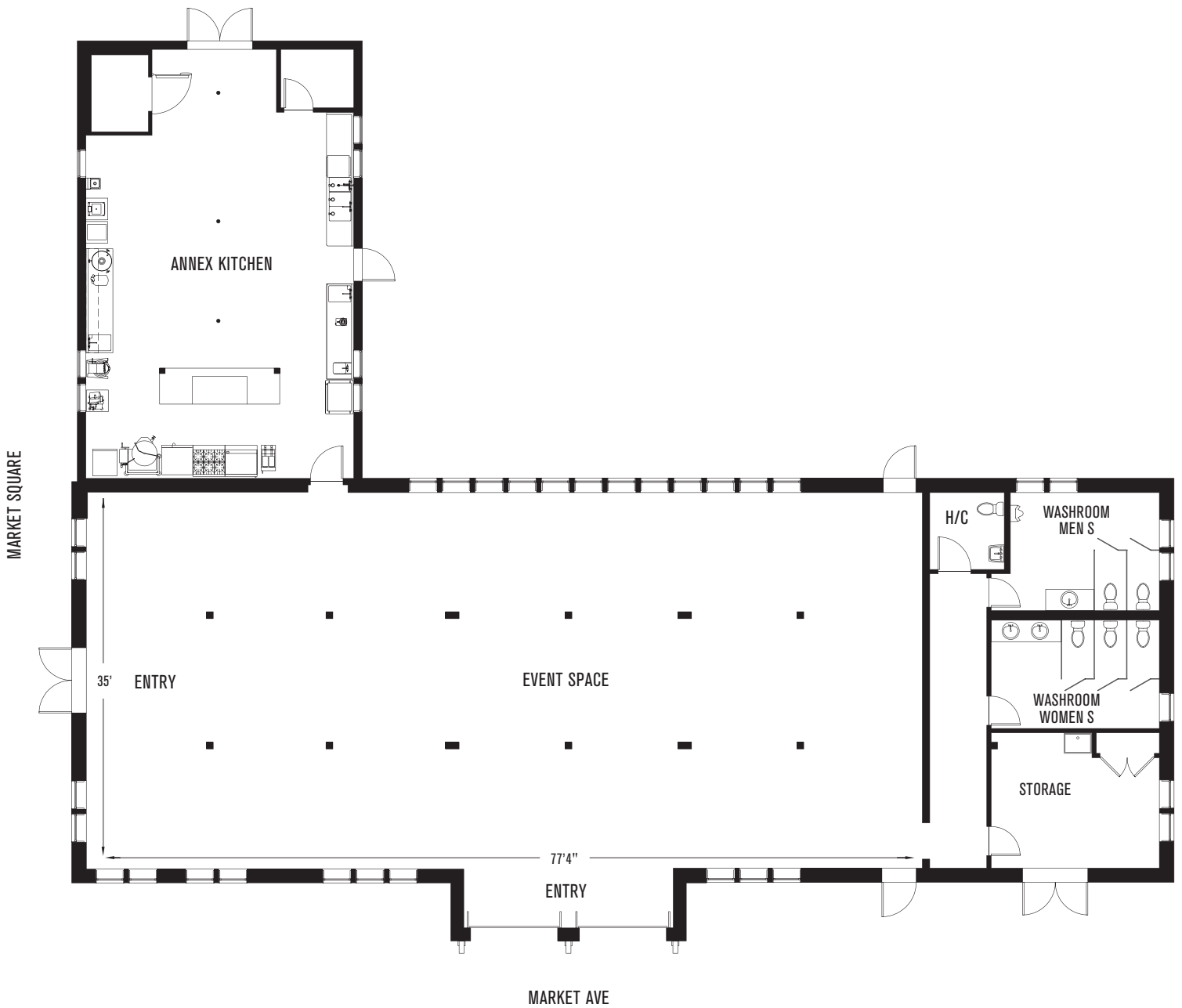
120 guests

EVENT SPACE

2,304 sf

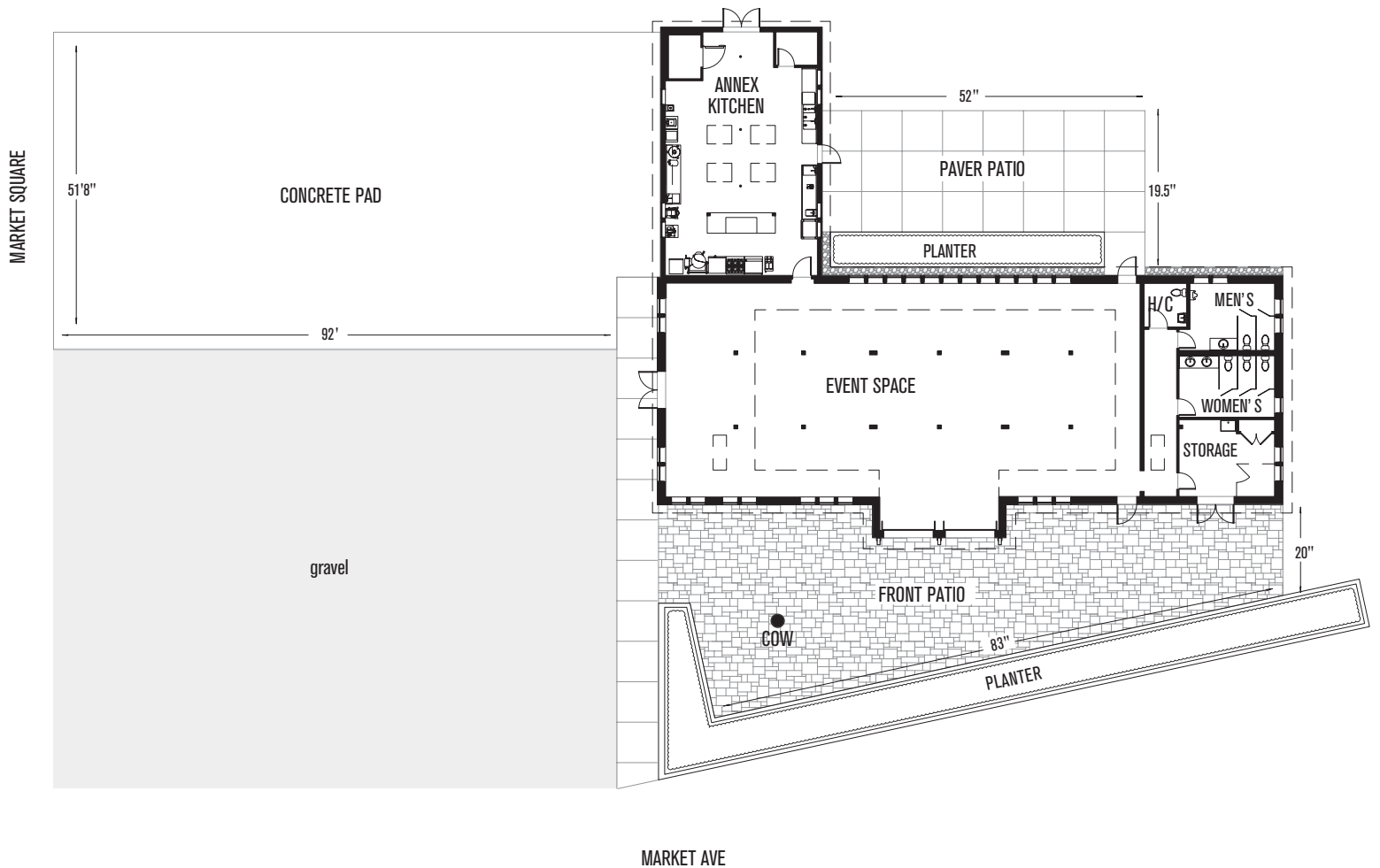
KITCHEN

897 SF



Dimensions, Sizes, Specifications, Layouts and materials are approximate only and subject to change without further notice.

# Red Barn & Surrounding Area





# Red Barn Pricing Structure 2024

(subject to availability, subject to change without prior notice)

Item	Term	Cost (excludes GST)
Wedding	½ day rental day prior to wedding from 12-6pm 1 full day rental 9am-11pm ½ day rental day after wedding from 8am-12pm Venue Coordinator (day of event, up to 12 hours) Venue Coordinator (up to 5.5 hours of time for questions/admin)	<del>\$7200</del> Sold Out
Full day rental*	Friday & Sunday + Holidays 9am-11pm	\$2,550
Mid week rate (Full day) Excluding holidays	Monday – Thursday	\$1,850
Mid week rate (Half day) Excluding holidays	Monday – Thursday (up to 6 hours)	\$900
Non refundable deposit		25%
Refundable damage/excessive cleaning deposit		\$500 per booking
Liability insurance	All rentals require the user to purchase General Liability Insurance of \$2 million	Variable
Equipment	130 chairs 25 rectangle 6 foot tables 22 round 6 foot tables Garbage receptacles Beverage bar \$150 per booking (optional)  Please note that tables and chairs are used for a variety of events and may require covering with linens (linens and smallwares not supplied).	Included in any rental fee

\*Discounts available for non profit, charitable status businesses and Southlands Tsawwassen residents

Limited half day Saturday rentals available, 4 pm - 11 pm. Please enquire.

Bookings that take place on a long weekend (Fri-Mon) or on a statutory holiday will incur a 25% increase for the amount of the rental cost.

# Red Barn Pricing Structure 2025

(subject to availability, subject to change without prior notice)

Item	Term	Cost (excludes GST)
Wedding	<p>Friday: daytime rental (day prior to wedding) from 9am-6pm for setup, rehearsal etc.</p> <p>Saturday: 1 full day rental from 9am-11pm</p> <p>Sunday: 1/2 day rental (day after wedding) from 8am-12pm for event cleanup, rental returns/pickups etc.</p> <p>Venue Coordinator (Saturday, up to 12 hours)</p> <p>Venue Coordinator (up to 5.5 hours of time for advance questions from time of booking)</p>	\$7895
Full day rental*	Friday - Sunday + Holidays 9am-11pm	\$2,600
Mid week rate (Full day) Excluding holidays	Monday – Thursday	\$1,900
Mid week rate (Half day) Excluding holidays	Monday – Thursday (up to 6 hours)	\$990
Non refundable deposit		25%
Refundable damage/excessive cleaning deposit		\$700 per booking
Liability insurance	All rentals require the user to purchase General Liability Insurance of \$2 million	Variable
Equipment	<p>130 chairs</p> <p>25 rectangle 6 foot tables</p> <p>22 round 6 foot tables</p> <p>Garbage receptacles</p> <p>Beverage bar \$150 per booking (optional)</p> <p>Please note that tables and chairs are used for a variety of events and may require covering with linens (linens and smallwares not supplied).</p>	Included in any rental fee

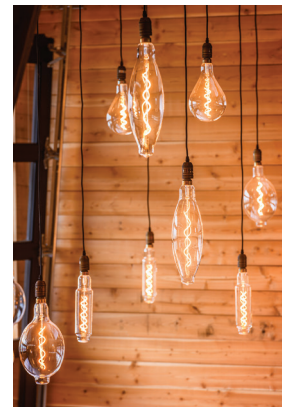
\*Discounts available for non profit, charitable status businesses and Southlands Tsawwassen residents

Limited half day Saturday rentals available, 4 pm - 11 pm. Please enquire.

Bookings that take place on a long weekend (Fri-Mon) or on a statutory holiday will incur a 25% increase for the amount of the rental cost.

# Gallery

Part of the original dairy farm at Southlands, this historic barn's original character and patina has been refreshed and repurposed to create a modern gathering place.





# Red Barn Suggested Vendors

## Catering

**Coast Tsawwassen Inn Catering** - [TsawwassenInn.com](http://TsawwassenInn.com)

Marie Durham (Catering & Convention Manager)

604.948.5182

maria.durham@tsawwasseninn.com

**Savoury City Catering** - [Savourycity.com](http://Savourycity.com)

604.875.8484

info@savourycity.com

**Ritz Catering** - [RitzCatering.ca](http://RitzCatering.ca)

604.576.9143

info@ritzcatering.ca

**Jay Bird Creations** - [JayBirdCreations.com](http://JayBirdCreations.com)

jaybirdcreations@gmail.com

**Buenos Dias Cafe** - [BuenosDias.ca](http://BuenosDias.ca)

Adrian Dias 778.847.1647

chefadrian@buenosdias.ca

**Cuisine and Company Catering** [CuisineandCompany.ca](http://CuisineandCompany.ca)

Marilyn Pearson 604.767. 3104

events@cuisinandcompany.ca

## Planners

**Kreative Operations**

[KreativeOperations.com](http://KreativeOperations.com)

## Photographer

**Travis Jeffers**

604.315.8028

[PointBlankPhoto.com](http://PointBlankPhoto.com)

---

## Suppliers

**Surdel Party Rental** - [SPRentals.ca](http://SPRentals.ca)

604.596.1771

info@surdelpartyrentals.com

**Custom Event Rentals** - [CustomEventRentals.com](http://CustomEventRentals.com)

604.352.3412

info@customeventrentals.com

**Thrifty Flowers** - [ThriftyFoods.com](http://ThriftyFoods.com)

Customer Care - 1.866.948.0196

**Beholden Events** - [BeholdenEvents.com](http://BeholdenEvents.com)

604.768.8571

hello@beholdenevents.com

**Rewild Flower Farm** (Erin Perry)

[RewildFlowerFarm.square.site](http://RewildFlowerFarm.square.site)

rewildflowerfarm@gmail.com

**Pedersens Event Rentals**

[Vancouver.Oedersens.com](http://Vancouver.Oedersens.com)

604.324.7368

sales.vancouver@pedersens.com

**Everlasting Sepals** (Event Decor)

[EverlastingSepals.com](http://EverlastingSepals.com)

604.704.7667

arkitek0128@hotmail.com

SOUTHLANDS  
**GRANGE**

Centre for Farming & Food

TO LEARN MORE

EMAIL US TODAY



604.655.4769  
INFO@SOUTHLANDSGRANGE.CA

SOUTHLANDS MARKET SQUARE  
6388 MARKET SQUARE, TSAWASSEN

